

**WE  
CHANGE  
POWER TO  
ENERGY**

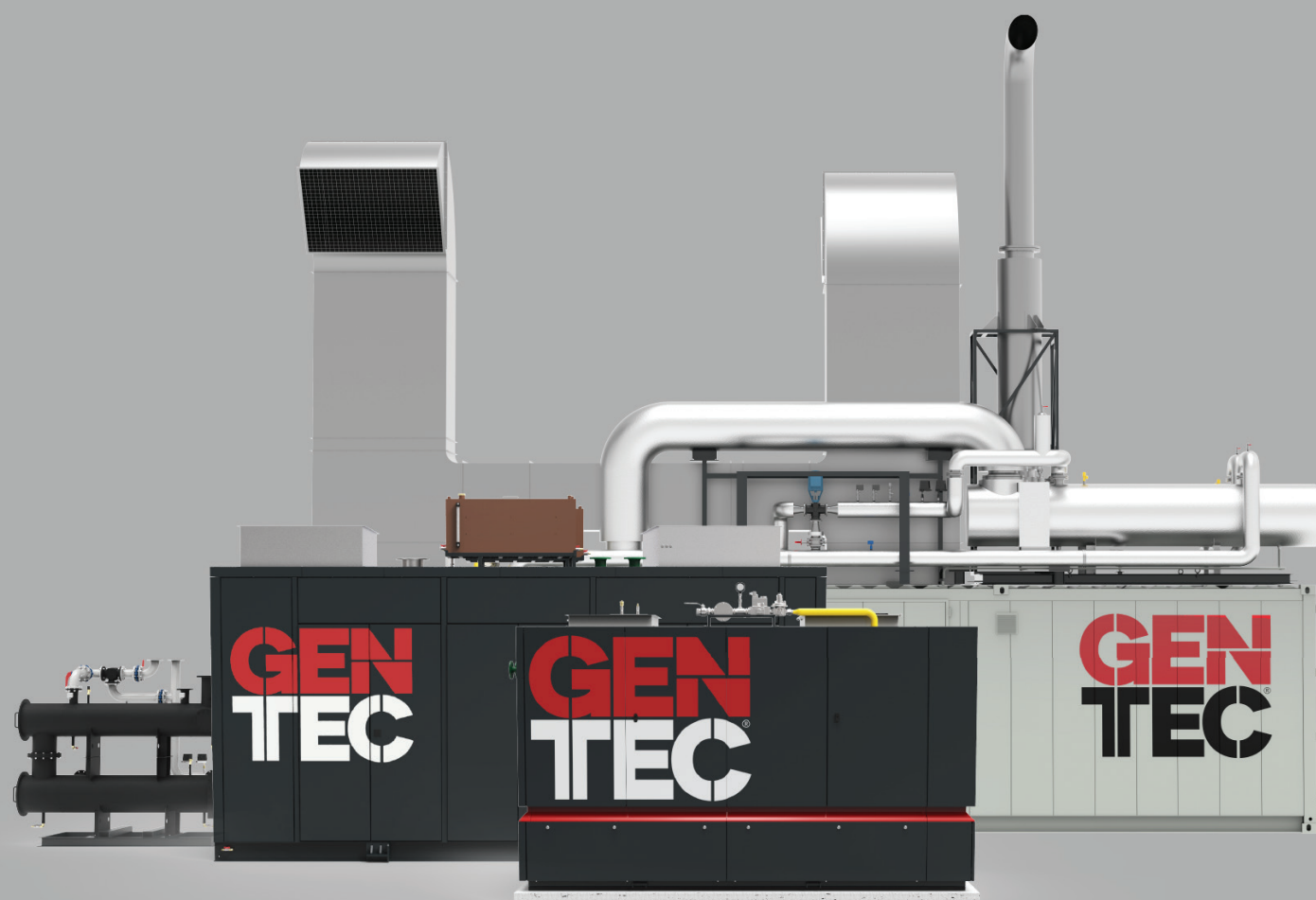


**GEN  
TEC**

THANKS TO THE WIDE POWER RANGE  
OF OUR PRODUCTS WE CAN MEET  
THE NEEDS OF OUR CUSTOMERS.

ALL UNITS ARE AVAILABLE IN FRAME, CANOPY  
OR CONTAINER VERSION.

NATURAL GAS, BIOGAS, HYDROGEN, OR OTHER  
SPECIAL GASSES CAN BE USED AS THE FUEL.



# GENTEC CHP

## COGENERATION UNITS 50–530 kW<sub>e</sub> WITH MAN

It is the power range designed for the widest group of customers. The reliable technology is based on MAN engines and LSA generators. High efficiency, compact dimensions and solution flexibility – all of this is the advantage of our cogeneration units in this power range.

## COGENERATION UNITS 530–2500 kW<sub>e</sub> WITH MTU

Units with power output above 530 kW<sub>e</sub> are equipped with MTU gensets for both low and medium voltage. In combination with highest quality technologies are suitable for use in energy demanding areas, or as a flexible complement of renewable energy sources.

## ABOUT US

We are company that believes that cogeneration is an important part of the future of the energy sector.

We are constantly striving to move forward and improve our products. Innovation and new technologies are close to us and we care about the reliability and quality of all components of our units.

Our development center and production is located in Brno 2nd largest city of the Czech Republic, the city of science, research and innovation, thanks to which we have the opportunity to cooperate with universities and top development centers within our projects.

We grow, together with our product.

# OUR STRENGTHS



### FOCUS ON QUALITY

We build our CHP units from the highest quality components from renowned world manufacturers.



### SERVICE NETWORK

We are constantly expanding service network and investing to education of our technicians. High level and quality of service is our priority.



### PRO-CUSTOMER APPROACH

We are guided by the fact that the pro-customer approach is the simplest recipe for success.



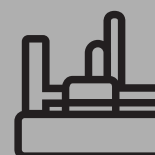
### PARTNERSHIPS

Experienced in cooperation with small business as well as large corporations.



### SERVICE SUPPORT

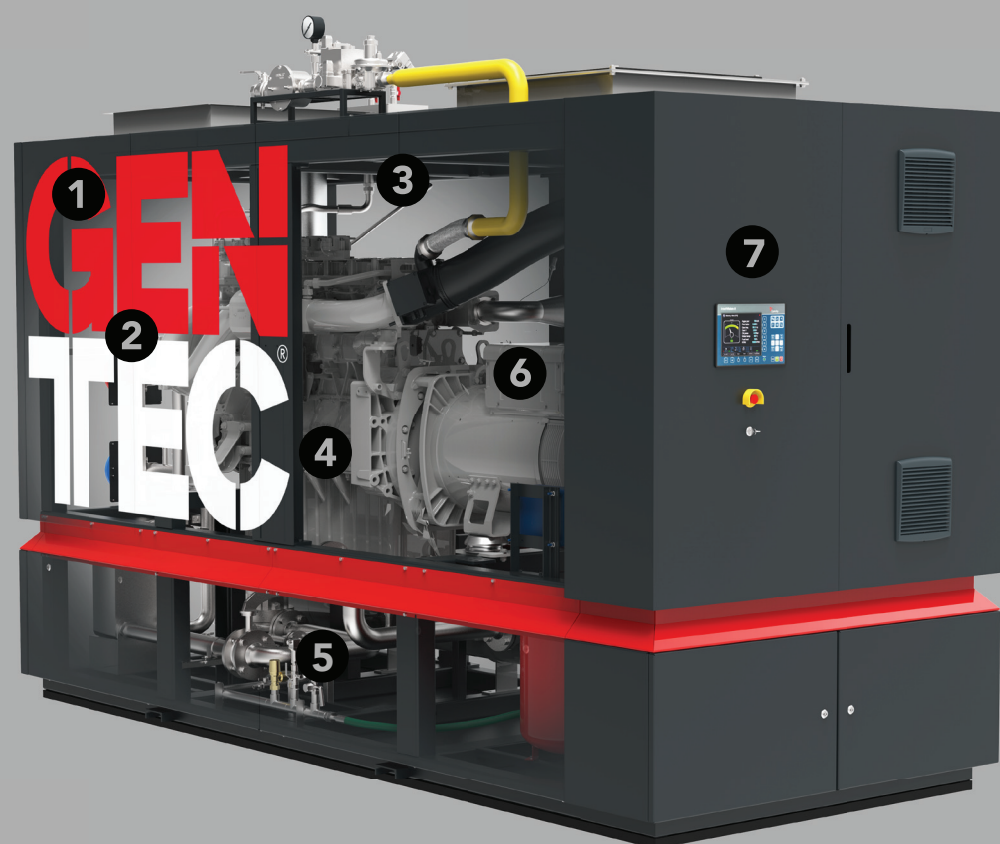
Remote service as if we were there. Training, troubleshooting and consulting using 3D AR technology.



### PRODUCTS FLEXIBILITY

We have a standardized product line. But we are ready to deliver you customized solution.

WE PLACE THE HIGHEST IMPORTANCE ON INNOVATIONS AND CONTINUOUS IMPROVEMENTS OF OUR PRODUCTS AND SERVICES. IN THE DEVELOPMENT AND MANUFACTURING OF COGENERATION UNITS, WE PLACE EMPHASIS ON THE FLEXIBILITY AND FUNCTIONALITY OF THE STRUCTURAL DESIGN. TAKE A LOOK ON WHAT IS THE ADDED VALUE OF OUR SOLUTIONS, BY WHICH WE DIFFER FROM THE OTHERS.



#### 1 COMPACT DIMENSIONS

Allow installing units in areas which do not offer much space.

#### 2 CANOPY/CONTAINER

Units can be modified to silent version, which absorb motor generator noises. This variant meet demanding noise protection requirements. Suitable for installation in buildings.

#### 3 ECO FRIENDLY

Our units show very low emissions and high efficiency. It makes them a sustainable solution.

#### 4 ENGINES

We use MAN, MTU engines which rank, with their efficiency and reliability, among the best technologies available on the market.

# OUR SOLUTIONS

#### 5 EXHAUST EXCHANGER

Is developed for us and supplied by the renowned German company Aprovis.

#### 6 GENERATORS

Leroy-Somer generators are excellent with their quality and reliability. They are considered top-class products in the field of cogeneration units.

#### 7 CONTROL SYSTEM

Our control system collect and process data from your CHP by using AI and machine learning technology and thus prevent defects and reduce service costs.



# MAJOR GLOBAL MANUFACTURER



THE FASTEST GROWING  
MANUFACTURER OF CHP  
IN CENTRAL EUROPE

Active in more than  
10 countries.

# GENTEC INNOVATIONS

We place great emphasis on improvement and innovation within the energy future. We already have completed complex projects with SCR and we know how to burn dual fuel. Hydrogen ready cogeneration, CHP control system using artificial intelligence and low emission solutions are three main directions of current development.

## COOPERATION WITH UNIVERSITIES

As part of research and development, we cooperate with selected universities on projects aimed at improving and innovating our CHP units. Our projects are supported within the grant programs of the Ministry of Industry and Trade.

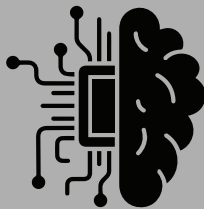


# RESEARCH AND DEVELOPMENT



## LOW-EMISSIONS SOLUTIONS

In cooperation with industry leaders, we are ready to offer low-emissions solutionst.



## ARTIFICIAL INTELLIGENCE

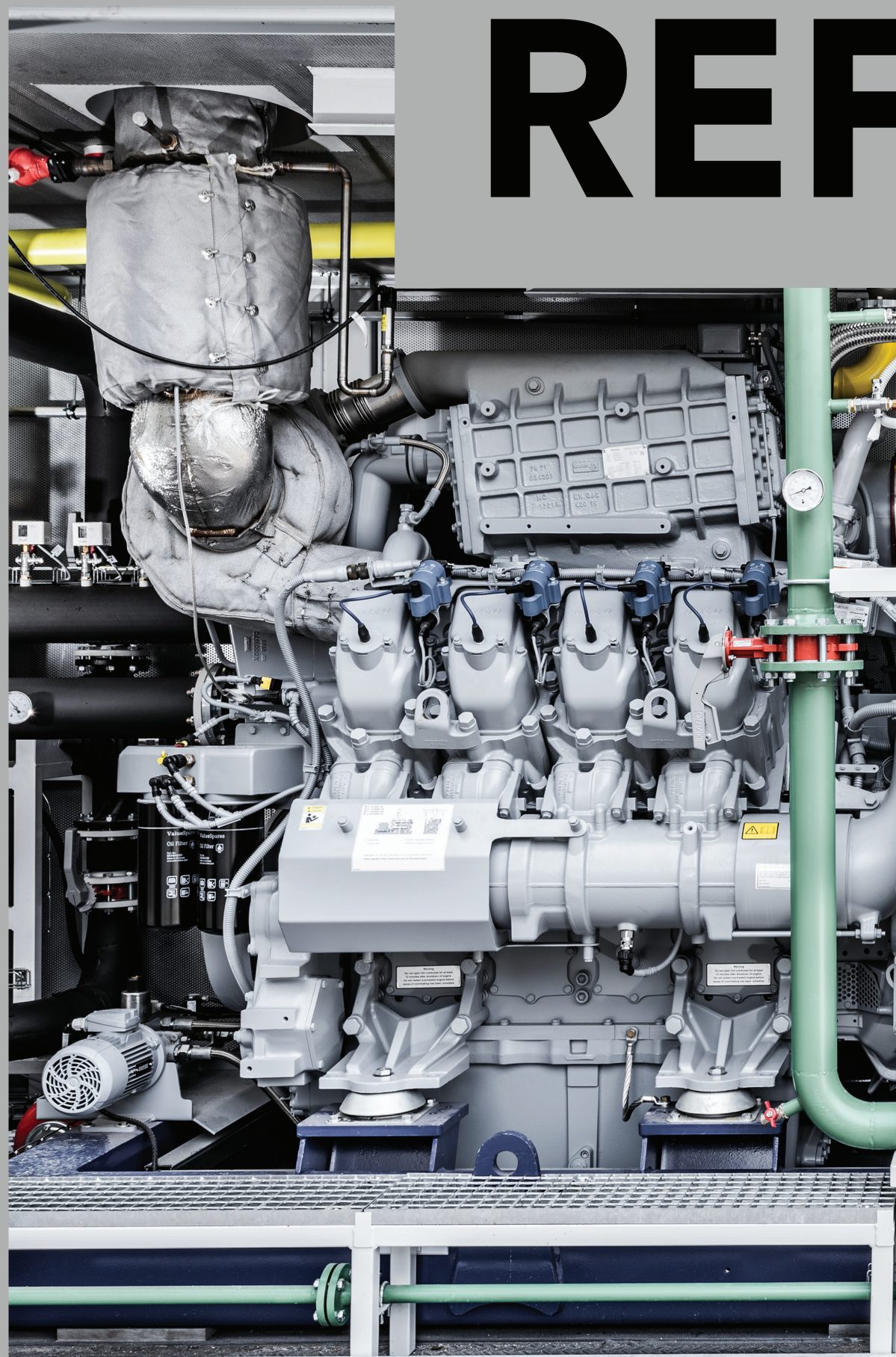
Our solution allows decentralized resources to be aggregated into virtual power plants which in combination with other systems serve as a management tool. This solution provides flexibility for stabilization of energy systems.



## HYDROGEN READY

We are developing CHP combusting hydrogen in mix with natural gas and other gasses.





# REFERENCES

## MALT HOUSE INSTALLATION

**CLIENT:**

Tabor  
Amper Generation s.r.o.

**CHP TYPE:**

KE-MTUNG 1000

**EMISSION:**

Low-emission solution

**IMPLEMENTATION:**

Cannopy

**SOLUTION:**

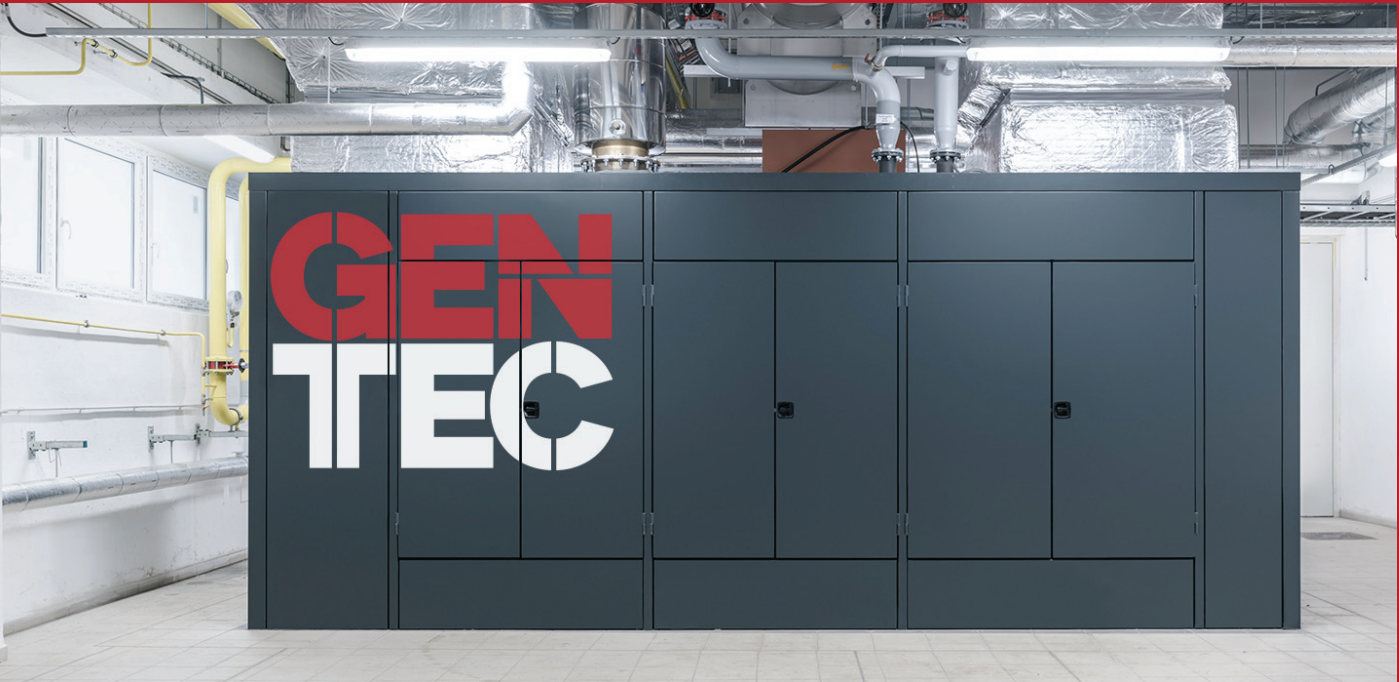
Turn-key solution







DISTRICT HEATING  
INSTALLATION



CLIENT:	Nachod Innogy
CHP TYPE:	KE-MTUNG 1000
EMISSION:	Low-emission solution
IMPLEMENTATION:	Canopy
SOLUTION:	Turn-key solution

REFERENCES



# REFERENCES

## GREEN HOUSE INSTALLATION

CLIENT:

Mutenice  
Green House Mutenice

CHP TYPE:

2 X KE-MTUNG 1000

EMISSION:

Low-emission solution

IMPLEMENTATION:

Container

SOLUTION:

Turn-key solution



CLIENT:

Brno  
Tepłárny Brno a.s.

CHP TYPE:

KE-MNG 260 ECO

EMISSION:

Super low-emission solution

IMPLEMENTATION:

Canopy

## SECOND BIGGEST DISTRICT HEATING IN CZECH REPUBLIC

## DISTRICT HEATING IN PRAGUE



CLIENT:

Prague  
Veolia

CHP TYPE:

KE-MNG 130 ECO

EMISSION:

low-emission solution

IMPLEMENTATION:

Canopy

## DISTRICT HEATING IN PRAGUE

CLIENT:

Prague  
Veolia

CHP TYPE:

KE-MTUNG 1000

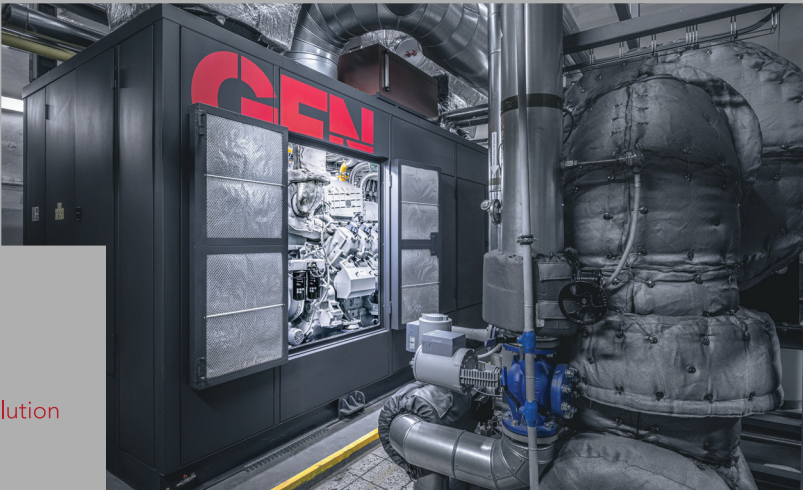
EMISSION:

SCR low-emission solution

50 NOX

IMPLEMENTATION:

Canopy





MAJOR  
CUSTOMERS  
AND  
PARTNERS

PARTNERS



CONTACT  
US

gentec@gentec.cz  
gentec.cz



in gentec-chp

**WE  
CHANGE  
POWER TO  
ENERGY**

**GEN  
TEC**